

FACE MASKS

From Design to Installation, Your Vision Without Compromise.™

Purchase your COVID-19 Face Masks Here

Premier face masks to support the health of your Hospitality Industry Staff!!

Product Specifications:

Solid Colored Two Layer Face Masks

(Higher quality as many masks are single layer)

- Mask Face: 100% Cotton or 50/50 Poly/Cotton: more breathable
- Mask Backing: Cotton Flannel: creates comfort
- Elastic 7" Ear Loops (5mm, white or black elastic) for better extension
- Nose Bridge: Seals mask more tightly and reduces fog with glasses
- Care Instructions:
 - Washable
 - Recommend laundering prior to use
 - Product will shrink (due to cotton fabric material)



Product Color Options:

Camel, Cobalt or Teal (See Page 2 for samples of colors)

Size:

One Size Fits All (See Page 2 for sample of model wearing the face mask)

Cost:

\$5.00 each (a minimum purchase of 10 face masks is required)

Also note that Shipping & Handling charges will be added to your invoice total.

Terms:

CBD: Cash or Credit Card

To Order Now Contact:

Name: Sandy Westphal

Email: sandy.westphal@decind.com

Phone: 800.678.5423 Ext. 231

Billing/Shipping Information Required:

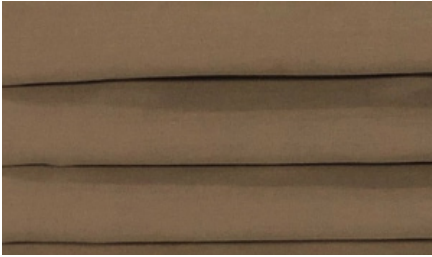
- Name
- Shipping Address
- Payment Address (if different than shipping address)
- Phone Number Contact to Shipping Address
- Credit Card Information or Cash Payment Specification

***Currently, we are able to ship within two days from receipt of order.*

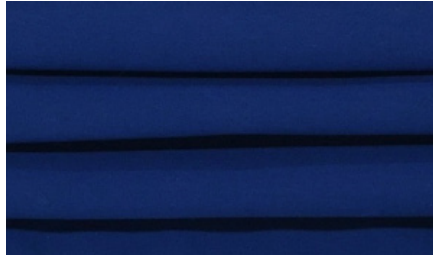
*See Page 2 for
Face mask Colors
and Model!*



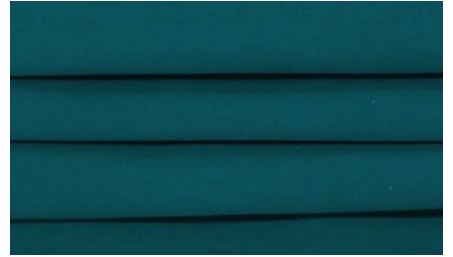
Color Choices



Camel



Cobalt



Teal

Sample Model



Two Layer Face Masks. One Size Fits All.

*Please understand that our fabric face masks are washable and reusable, but are not a replacement for medical grade Personal Protective Equipment, and in circumstances where medical grade Personal Protective Equipment is recommended, you should consult a health care professional. The decision to use this mask is solely your own.

Please remember that use of face masks is not intended to replace other recommended measures to stop the community spread of COVID-19, such as social distancing, washing your hands and refraining from touching your face. Follow the latest advice of the CDC and your own health care professionals as to how best to keep yourself safe.