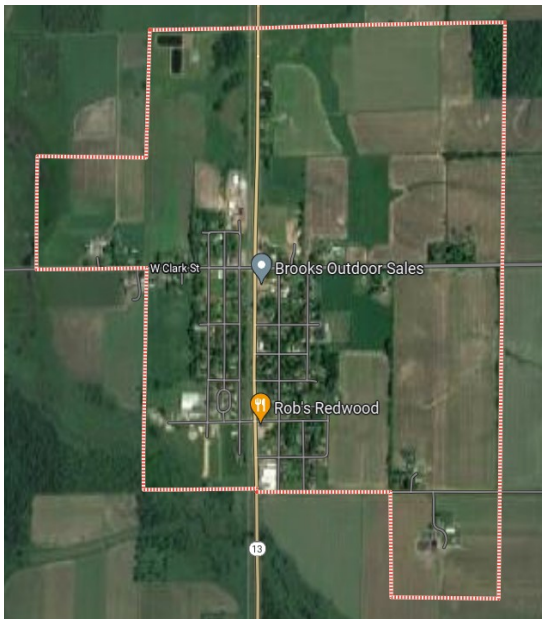
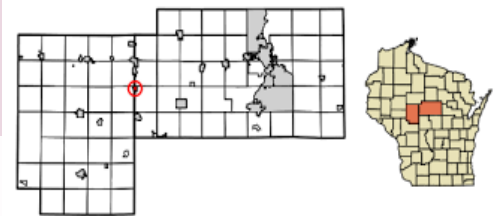


Village of Unity, Wisconsin

The Unity is a village in Clark and Marathon counties in Wisconsin and is part of the Wausau, Wisconsin Metropolitan Statistical Area.



Unity began in 1872 with the coming of railroad and lumbering, but today the community's economy rests heavily upon agriculture. It was lumber that brought D. J. Spaulding here in 1873, a year after the Wisconsin Central Railroad (now the Soo Line) came into the area.



Unity is considered a Small Town with a population of 350 + residents. Some of the largest industries in Unity are professional services and dairy farms.



Village of Unity Clerk:

121 N Madison St, P.O. Box 47, Unity WI 54488
Ph: 715-223-4362, unityclerk@nmadison.net

Businesses in Unity & Surrounding Area



"Unity offers residents a rural feel with a small community atmosphere!"

Businesses in the heart of Unity

American Legion Post 358
B&D Fabricators LLC
Brooks Outdoor Sales
Construction Corner of CW
Country Health Clinic
Provision Partners Cooperative
Story Time Bookshoppe
Trinity Lutheran ELCA
Unity Memorial Hall
Unity Post Office
Village of Unity City Garage

Food Hubs/Bars

Happy BeerZ Bar
One Last Cast Bar & Grill
Perla's Place
Ripp's Bar & Grill



Nearby Community Businesses:

Central Wisconsin Mulch LLC
Carey Repair & Maintenance
D & A Automotive & Light Truck Sales & Services
Fairhaven Farm Supply LLC- IBA
Fairhaven Tractor
Frane Body Shop
Geiger Scrap & Salvage
Carey Freight Services
L & D Electric LLC
Martin's Forestry Products
R & R Auto
Spring Lake Campground LLC
SS Welding Services Inc
Solidcraft Cabinet Door Company
Stuttgen Stump Service
Sunrise Service LLC
Sunshine Market
TJ's Tire & Auto, LLC
Town & Country Lawn & Landscape

Clark County Economic Development & Tourism Bureau

301 N Main St., P.O. Box 236, Loyal, WI 54446

715-255-9100, info@clarkcountyedc.org, www.clarkcountywi.org