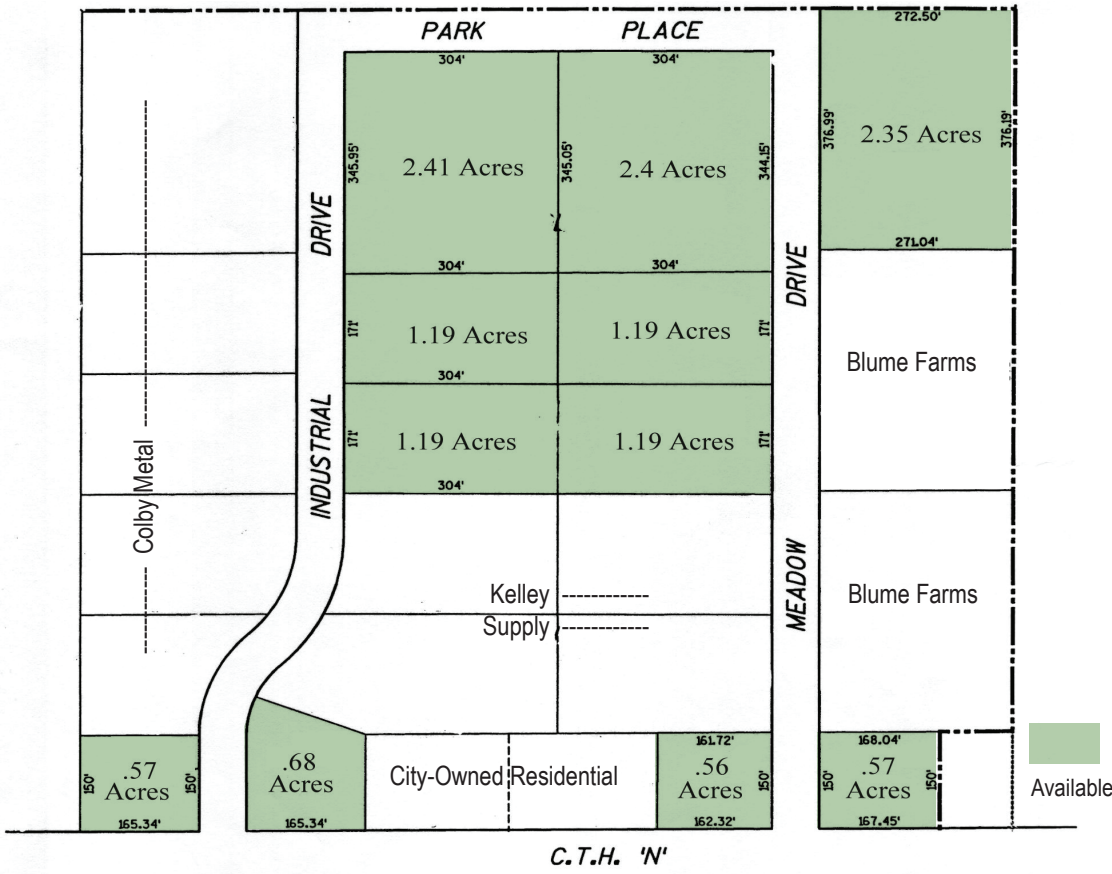


Colby, WI -- Industrial Park



SITE DESCRIPTION

The City of Colby has a number of lots available in the City's Industrial Park. The park is located at an ideal location near the intersection of State Hwy 13 and State Hwy 29. The Industrial Park is also located in a Tax Increment District and the city is able to offer cash TIF Incentives for construction in the park. The park is developed with black-topped streets and all utilities.

Site Specifications

SITE INFORMATION

Available Acres 17
Zoning Industrial

TRANSPORTATION

Nearest major highway State Hwy 13 / WI State Hwy 29 (Expressway)
Distance to nearest highway Adjacent
Lanes 2 / 4
Nearest comm. airport Mosinee
Distance to airport 35 miles
Runways – over 1700' Within 15 minutes
Rail provider Canadian National

UTILITIES

Electricity supplier Xcel Energy
Gas supplier WE Energies
Municipal water Yes
Municipal sewer Yes
Stormwater Yes

TELECOMMUNICATIONS

Fiber optics Yes

MEDICAL

Medical Yes
- Marshfield Clinic - Colby/Abbotsford Center <1 mi
- Aspirus Medford Hospital/Memorial Health Ctr 17 mi
- Marshfield Medical Center 20 mi
- National Farm Medicine Center 20 mi
- Marshfield Clinic Research Institute 20 mi
- Aspirus Wausau Hospital 35 mi
- Ascension St. Clare's Hospital 35 mi

INCENTIVES

Multiple Local, State, and Federal funding opportunities
Regional Business Fund WI
Financing & Tax
Credit Programs
WEDC/WHEDA/USDA/WBD
TIF
Focus on Energy
Labor training & others

TERMS

Negotiable
Land sales based on company investment and job creation

CONTACT

Sheila M. Nyberg
Executive Director
Clark County Economic
Development Corporation
301 N. Main St.
P.O. Box 236
Loyal, WI 54446
Phone: 715-255-9151
Fax: 715-255-9153
sheila@clarkcountyedc.org
www.clarkcountywi.org

James Schmidt
Mayor of Colby
P.O. Box 236
Colby, WI 54421
Phone: 715-223-4435
Fax: 715-223-8835
clerk@cityofcolby.org



A growing community proud of its heritage

City of Colby

P.O. Box 236, Colby, WI 54421

www.ci.colby.wi.us

Phone: 715-223-4435

Colby, a small city in northern Clark County, was named for the Colby family who was instrumental in bringing the Wisconsin Central Railroad to the area in the 1870s. A historical marker notes the development of "Colby Cheese" by Joseph Steinwand in the 1880s. Steinwand's development stood apart from the others because it was the only natural cheese native to the United States of America.

The Clark County Historical Society has established the Rural Arts Museum in Colby. The Colby Chamber of Commerce and the Colby Future Farmers of America Alumni sponsor the annual Dairy Breakfast on a Colby area farm each June. Another annual event is Colby Cheese Days. Come and visit Colby, "Home of the Famous Colby Cheese!"

www.ci.colby.wi.us



Travel Time to Colby, WI

To and from Colby	Miles
Eau Claire, WI	68
Wausau, WI	36
Minneapolis/St. Paul, MN	153
Madison, WI	159
Green Bay, WI	129
Milwaukee, WI	221
Chicago, IL	305

